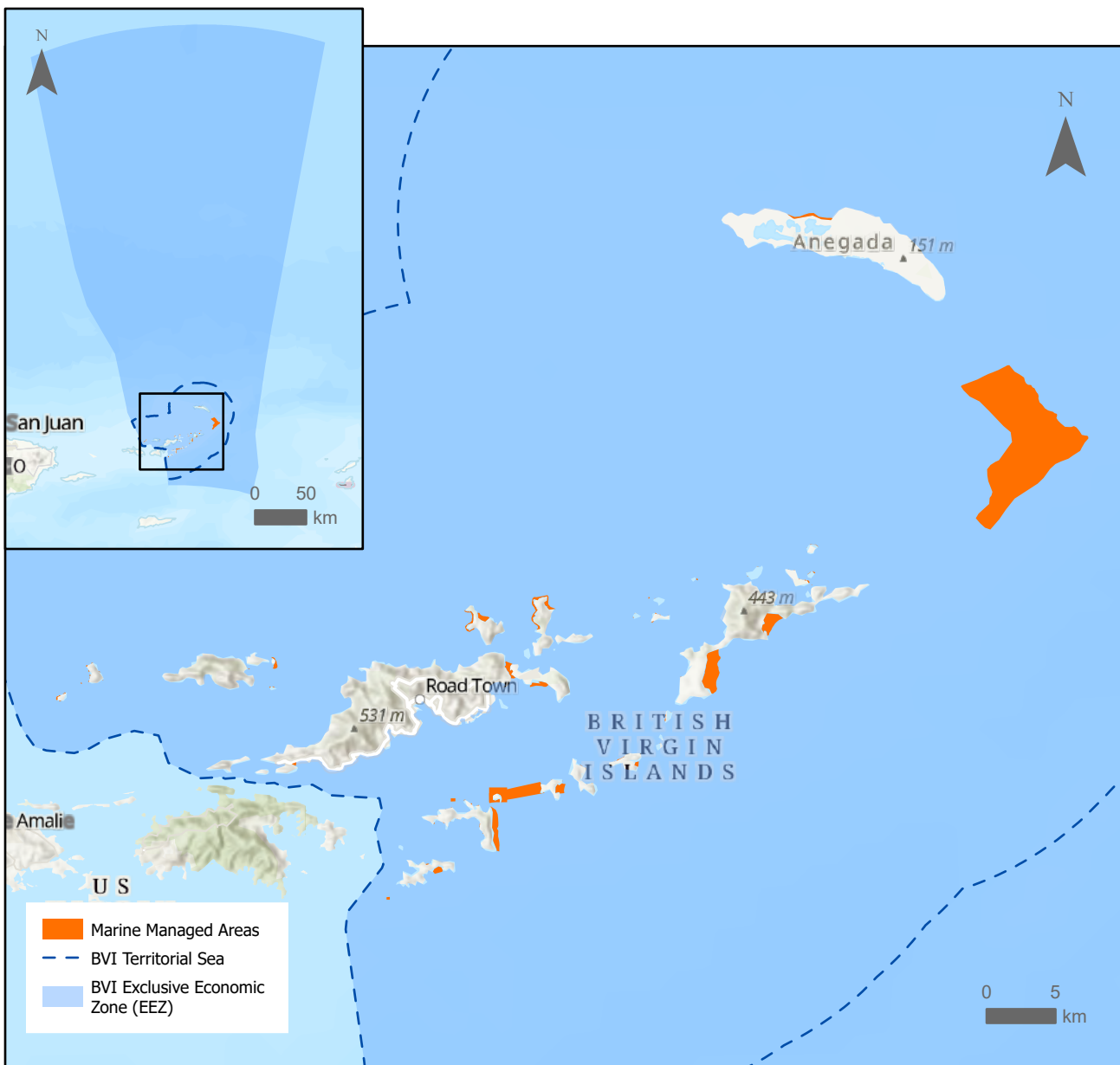


British Virgin Islands Seascape Analysis

British Virgin Islands (BVI) has a total marine area of approximately 81,555 sq. km.
There are 56 place-based regulations in the ProtectedSeas Navigator database that manage this area.



56 Marine Managed Areas

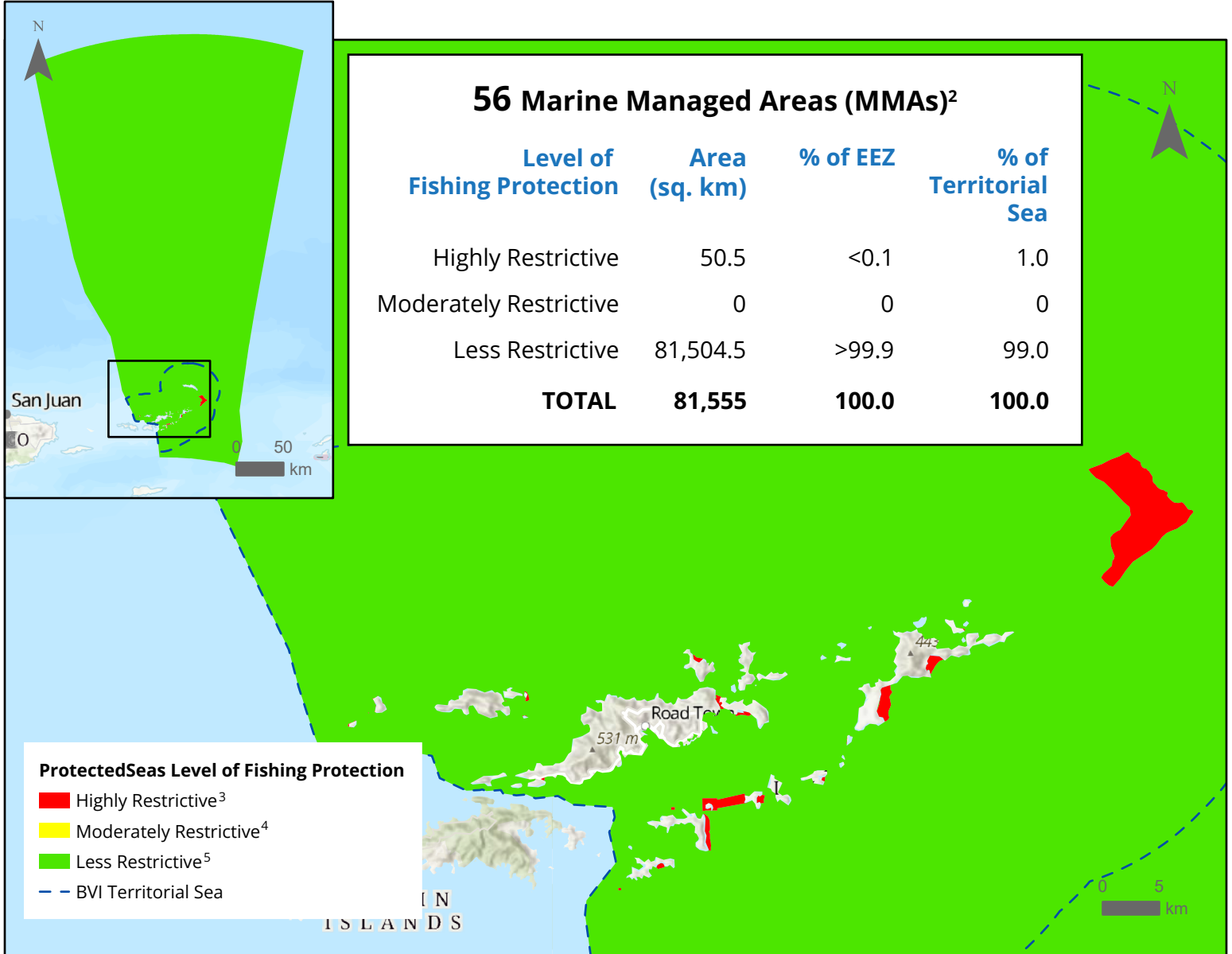
Cover approximately 52 sq. km, not including Jurisdictional Authority Areas (<0.1% of BVI's total marine area)

Area Designations:

- 20 Bird Sanctuaries
- 14 Fisheries Protected Areas
- 13 National Parks
- 6 Fisheries Priority Areas
- 2 Jurisdictional Authority Areas (EEZ and Territorial Sea)
- 1 Marine Park

We offer this compilation of data freely, and encourage wide usage. It has taken many years and intense effort by staff to create this platform. As a scientific courtesy, when using the data, please attribute it to ProtectedSeas.

British Virgin Islands ProtectedSeas Level of Fishing Protection (LFP)¹



Explore the map at protectedseas.net

info@protectedseas.net

1 - ProtectedSeas assigns a LFP score to each MMA based on an analysis of restrictions on marine life extraction. LFP scores are not cumulative, but only indicative of the regulation and management for each MMA; the highest LFP from all overlapping MMAs is shown in the map above. Due to the overlap of MMAs, a given ocean area may appear less protected than the cumulative analysis of all applicable regulations might indicate. Regulations are interpreted narrowly. In order for an activity to be coded as prohibited, the legal source must clearly and completely prohibit the activity, without exception or in such a way to apply only to specific species, people, gear, seasons, or vessels. Without a clear and complete prohibition, the activity will be coded as restricted or unknown.

2 - MMAs in the ProtectedSeas Navigator dataset include Marine Protected Areas as well as areas managed for fisheries purposes, such as permanent gear closure areas, that regulate extraction of marine life.

3 - Marine life removal is either fully or mostly prohibited (or entry is prohibited) with few exceptions, e.g. very limited or relatively non-intrusive recreational/sport or subsistence fishing. In BVI marine waters, these areas include: Fisheries Protected Areas, National Parks, and a Marine Park.

4 - Several species- or gear-specific restrictions apply OR commercial marine life removal is prohibited OR both commercial and recreational marine life removal are heavily restricted OR recreational marine life removal is prohibited and commercial marine life removal is restricted. In BVI marine waters, these areas include: None.

5 - At least one species- or gear-specific restriction applies (beyond permit requirements or generally applicable restrictions) OR no known restrictions exist for marine life removal beyond national or subnational generally applicable restrictions. In BVI marine waters, these areas include: Bird Sanctuaries, Fisheries Priority Areas, and Jurisdictional Authority Areas.

MMA boundary sources: The Nature Conservancy and ProtectedSeas and Flanders Marine Institute.

We offer this compilation of data freely, and encourage wide usage. It has taken many years and intense effort by staff to create this platform. As a scientific courtesy, when using the data, please attribute it to ProtectedSeas.

British Virgin Islands
 Marine Managed Areas in ProtectedSeas Navigator
 January 2023

#	Site_ID	Site Name	Designation	LFP
1	AIBVI10	Beef Island Channel	Fisheries Protected Areas	5
2	AIBVI40	Benous Bay	Fisheries Priority Area	1
3	AIBVI14	Big Reef and Little Reef Bays	Fisheries Protected Areas	5
4	AIBVI1	British Virgin Islands EEZ	Jurisdictional Authority	2
5	AIBVI2	British Virgin Islands Territorial Sea	Jurisdictional Authority	2
6	AIBVI26	Cockroach Island Bird Sanctuary	Bird Sanctuary	1
7	AIBVI28	Cooper Island Bird Sanctuary	Bird Sanctuary	1
8	AIBVI23	Dead Chest	Fisheries Protected Areas	5
9	AIBVI56a	Dead Chest Island Bird Sanctuary	Bird Sanctuary	1
10	AIBVI56	Dead Chest National Park	National Park	5
11	AIBVI3	Devil's Bay National Park	National Park	5
12	AIBVI29	Diamond Cay National Park	National Park	5
13	AIBVI53a	East Seal Dog Island Bird Sanctuary	Bird Sanctuary	1
14	AIBVI4	Fallen Jerusalem Island Bird Sanctuary	Bird Sanctuary	1
15	AIBVI4a	Fallen Jerusalem National Park	National Park	5
16	AIBVI5	Flamingo Pond Bird Sanctuary	Bird Sanctuary	1
17	AIBVI17	Frenchman's Cay	Fisheries Protected Areas	5
18	AIBVI36	Frenchman's Cay	Fisheries Priority Area	1
19	AIBVI30	George Dog Island Bird Sanctuary	Bird Sanctuary	1
20	AIBVI59	Ginger Island Bird Sanctuary	Bird Sanctuary	1
21	AIBVI31	Great Camanoe	Fisheries Priority Area	1
22	AIBVI32	Great Dog Island Bird Sanctuary	Bird Sanctuary	1

23	AIBVI41	Great Harbour	Fisheries Priority Area	1
24	AIBVI33a	Great Tobago	National Park	5
25	AIBVI33	Great Tobago Island Bird Sanctuary	Bird Sanctuary	1
26	AIBVI15	Green Cay	Fisheries Protected Areas	5
27	AIBVI12	Hans Creek	Fisheries Protected Areas	5
28	AIBVI11	Horseshoe Reef	Fisheries Protected Areas	5
29	AIBVI6	Little Fort National Park	National Park	5
30	AIBVI57	Little Tobago	National Park	5
31	AIBVI57a	Little Tobago Island Bird Sanctuary	Bird Sanctuary	1
32	AIBVI21	Money Bay	Fisheries Protected Areas	5
33	AIBVI37	Mosquito Island Bird Sanctuary	Bird Sanctuary	1
34	AIBVI39	Necker Island Bird Sanctuary	Bird Sanctuary	1
35	AIBVI16	North Bay	Fisheries Protected Areas	5
36	AIBVI60	Peter Island Bird Sanctuary	Bird Sanctuary	1
37	AIBVI47	Prickly Pear Bird Sanctuary	Bird Sanctuary	1
38	AIBVI47a	Prickly Pear National Park	National Park	5
39	AIBVI43	Round Rock Island Bird Sanctuary	Bird Sanctuary	1
40	AIBVI61	Saba Island Bird Sanctuary	Bird Sanctuary	1
41	AIBVI44	Salt Island Bird Sanctuary	Bird Sanctuary	1
42	AIBVI45	Sandy Cay National Park	National Park	5
43	AIBVI22	Santa Monica Rock	Fisheries Protected Areas	5
44	AIBVI46	Shark Bay National Park	National Park	5
45	AIBVI19	South Sound	Fisheries Protected Areas	5
46	AIBVI49	Spring Bay National Park	National Park	5
47	AIBVI50	St. Eustatia Bird Sanctuary	Bird Sanctuary	1
48	AIBVI18	Taylor Bay	Fisheries Protected Areas	5

49	AIBVI51	The Baths National Park	National Park	5
50	AIBVI34	The Bite	Fisheries Priority Area	1
51	AIBVI13	The Sound - Ginger Island	Fisheries Protected Areas	5
52	AIBVI20	The Sound - Salt Island	Fisheries Protected Areas	5
53	AIBVI8	West Dog Island	National Park	5
54	AIBVI35	West Guana Island	Fisheries Priority Area	1
55	AIBVI53	West Seal Dog Island Bird Sanctuary	Bird Sanctuary	1
56	AIBVI9	Wreck of the Rhone Marine Park	Marine Park	5